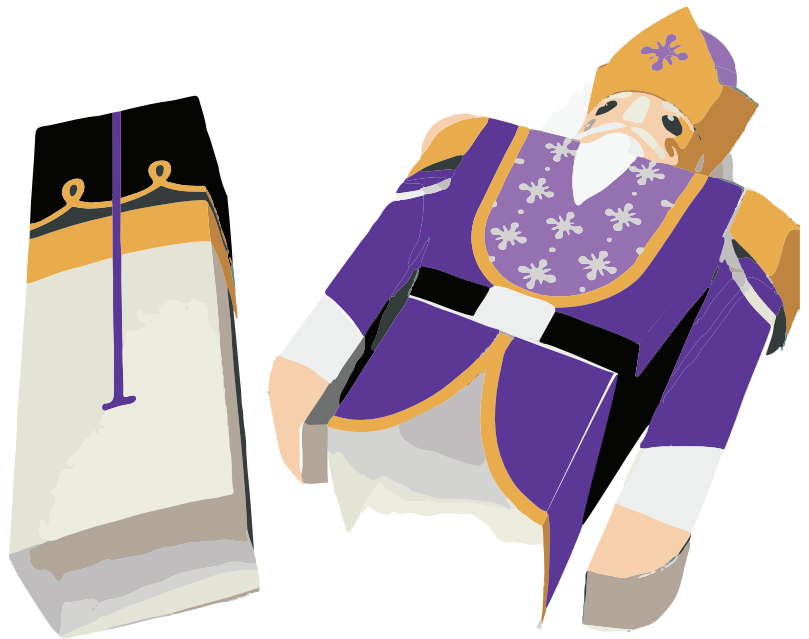


*black
diamond
ballet*

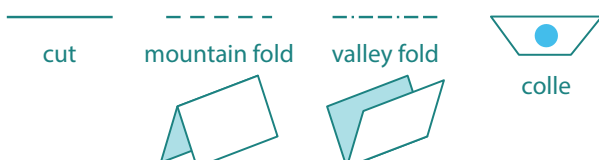
Crafting the Nutcracker



What you will need:

- A printer
- Printing paper : cardstock (highly recommended) or at least 150 g/m2, size A4 or letter
- Glue
- Scissors
- Craft knife

When folding, refer to the line's appearance :



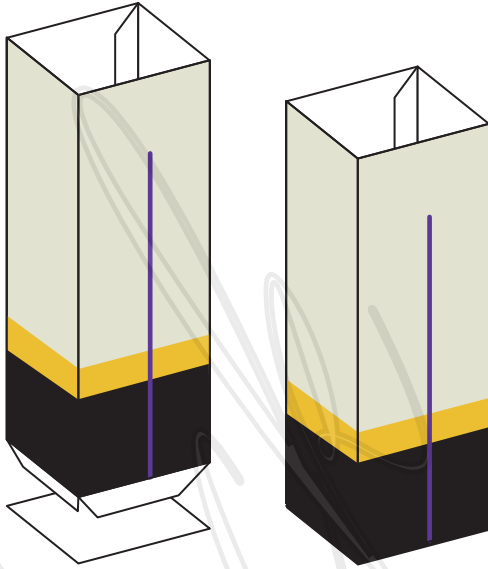
Tips

- > Print the artwork by selecting a high quality printing mode if you want more intense colours.
- > Be sure you make all the folds before moving on to the gluing phase.
- > For best results you can use a bone folder and a ruler to score the fold lines before cutting.
- > If you do not wish to score the paper, begin by folding all the lines as mountain folds. Then reverse the fold where the valley folds are needed. It will make the process of folding easier.

Instructions

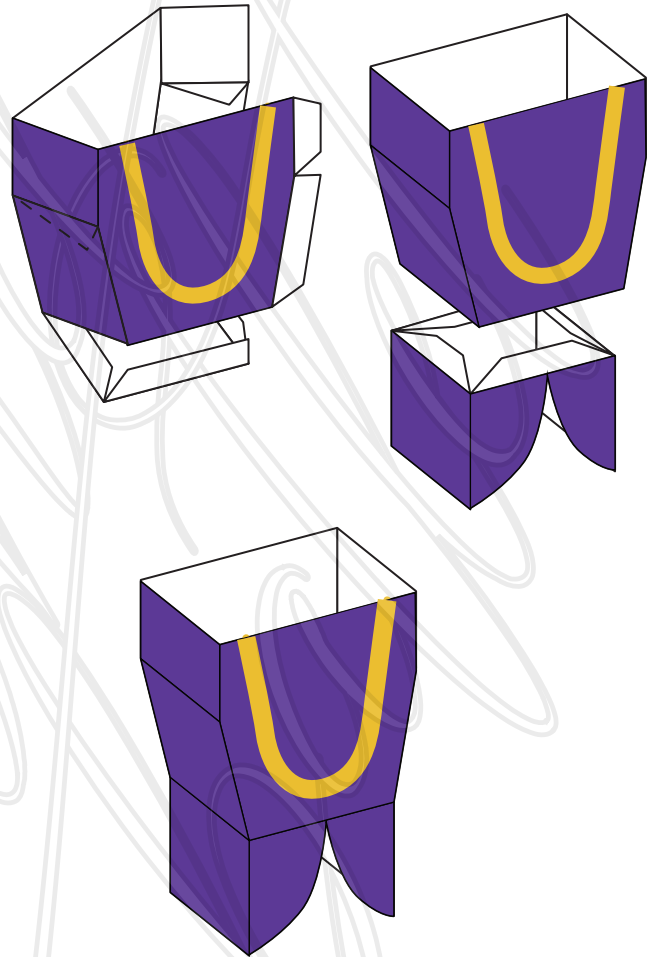
1. Cut and fold the «legs». Cut the «legs base». Glue the blue dotted tabs and assemble as shown to form a box.

Tip : use a pen or a ruler to reach the bottom and press on the tabs to help with the gluing process.



2. Cut and fold the «torso». Glue the torso as shown, following the numbers on the blue dots for an easier building.

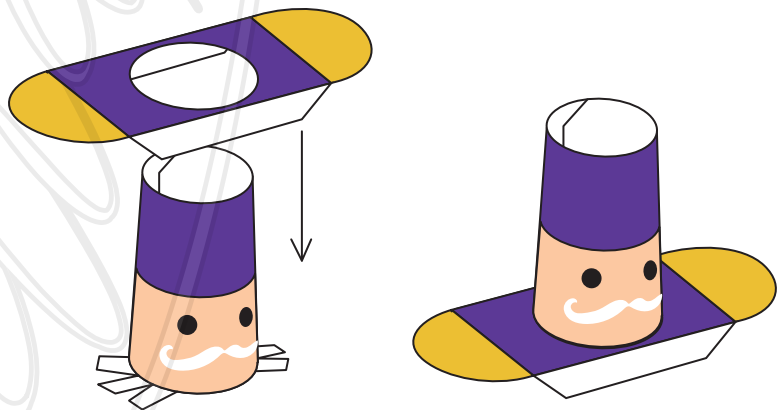
Cut and fold the «hips». Glue the tab «1», then glue the hips to the torso.



3. Cut and fold the «head». Glue the tab «1» to form the head.

Cut and fold the «shoulders».

Put glue on the head tabs «2», insert the head in the shoulders hole to assemble both elements.



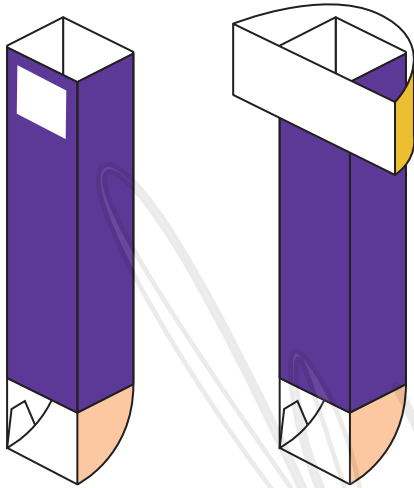
Instructions

4. Cut and fold the «left arm».

Glue the arm as shown.

Cut and fold the «left epaulet». Glue it as shown.

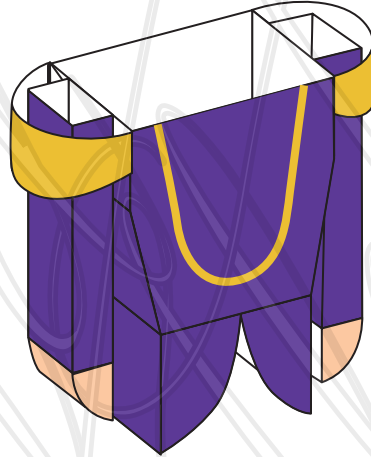
Glue the arm, centered, to the inside of the epaulet. The top of the arm should be aligned with the top of the epaulet.



5. Follow the same steps for the right arm and the right epaulet.

Glue both arms to the torso as shown.

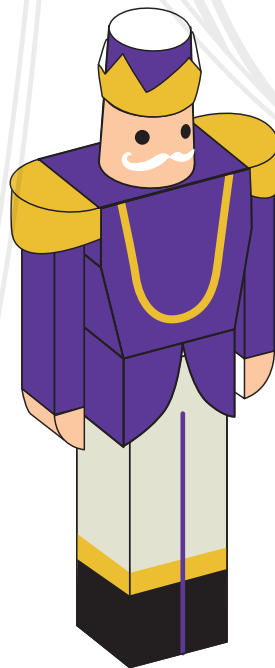
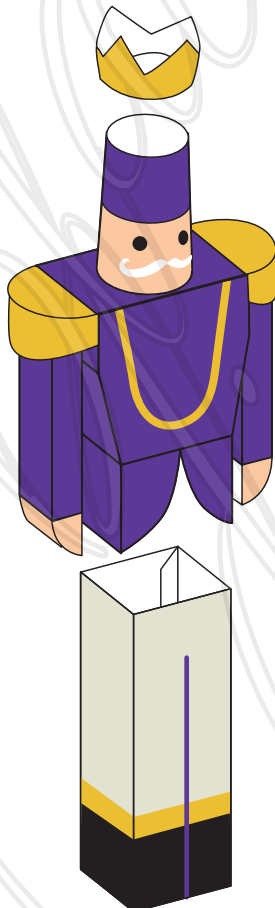
The top of the arm should be aligned with the top of the torso.

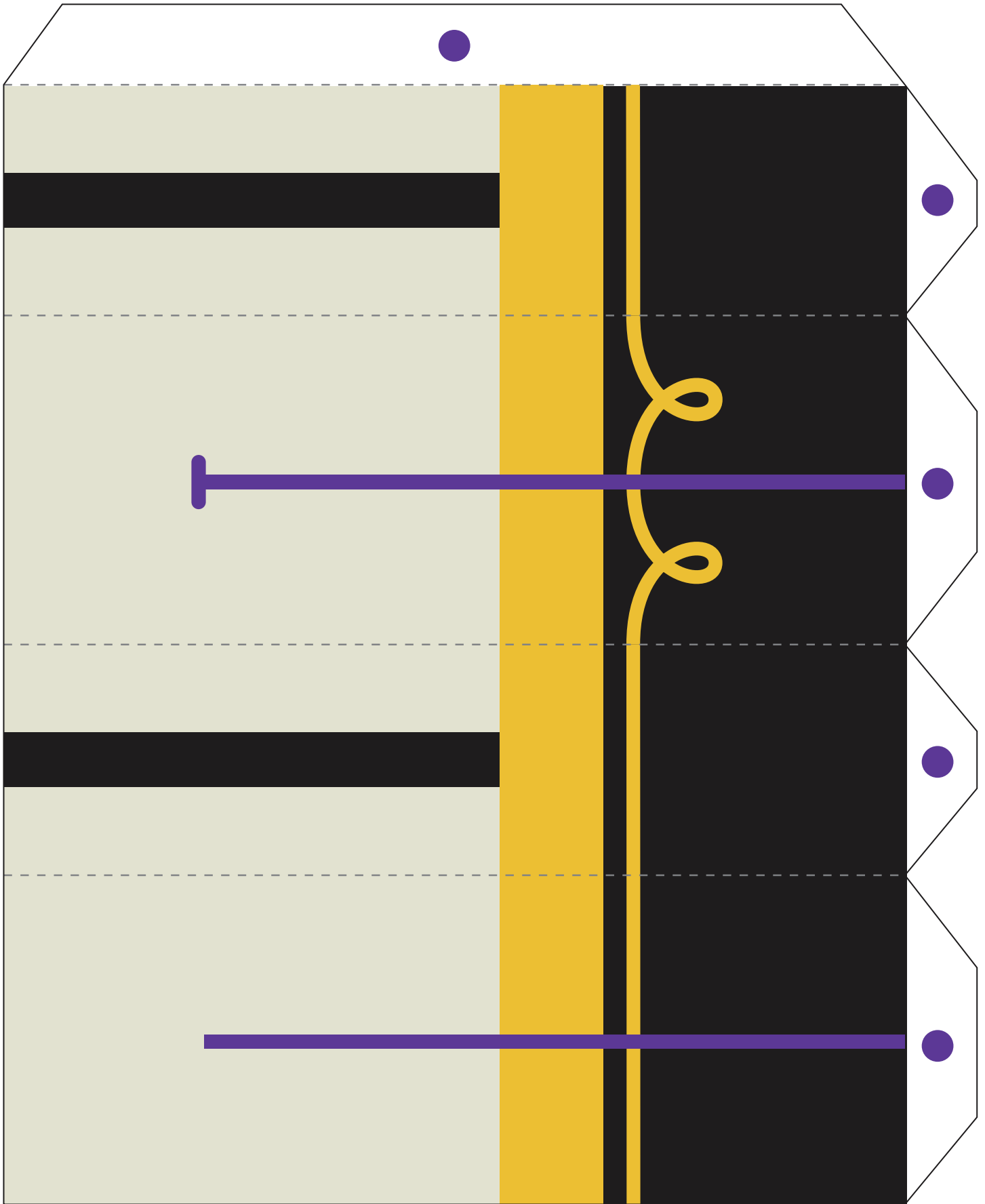


6. Cut and glue the crown. Insert it on the head.

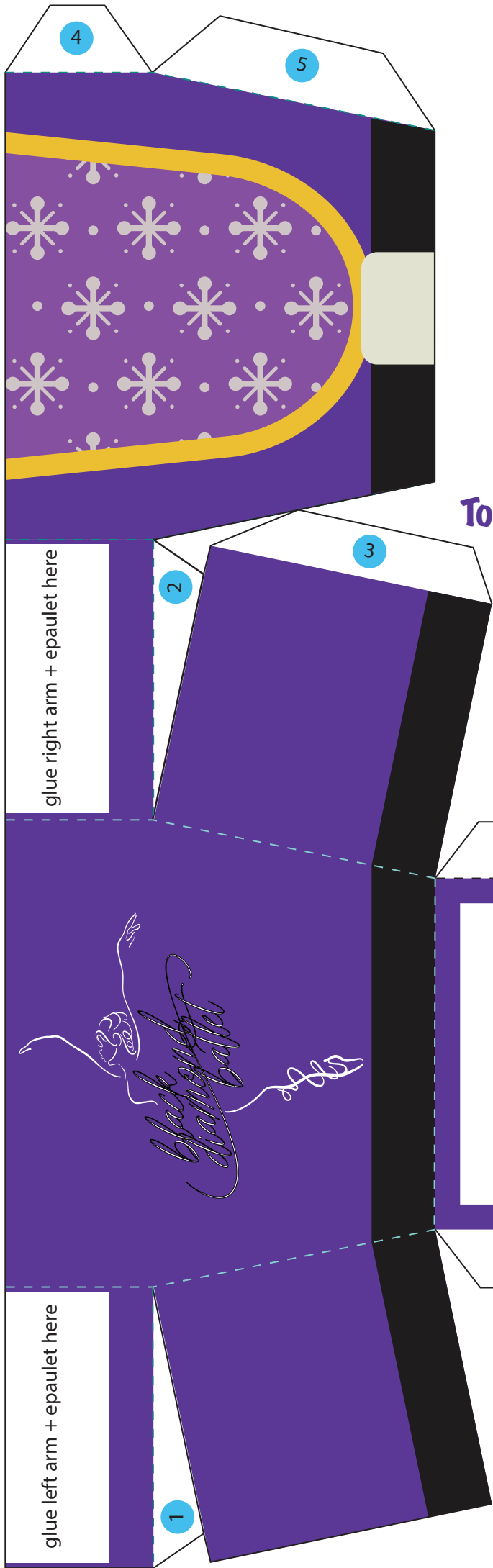
Fill the legs with goodies and fit the torso on the legs. You are done !

Tip : if the nutcracker is just for decor, fill it with dry material to prevent him from falling (raw rice, small pebbles etc.).

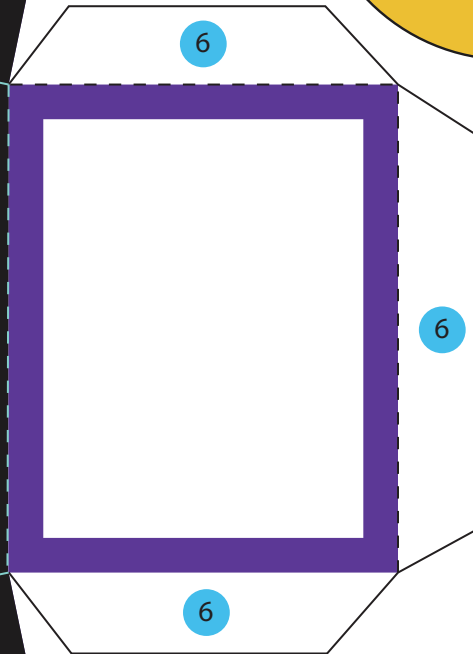
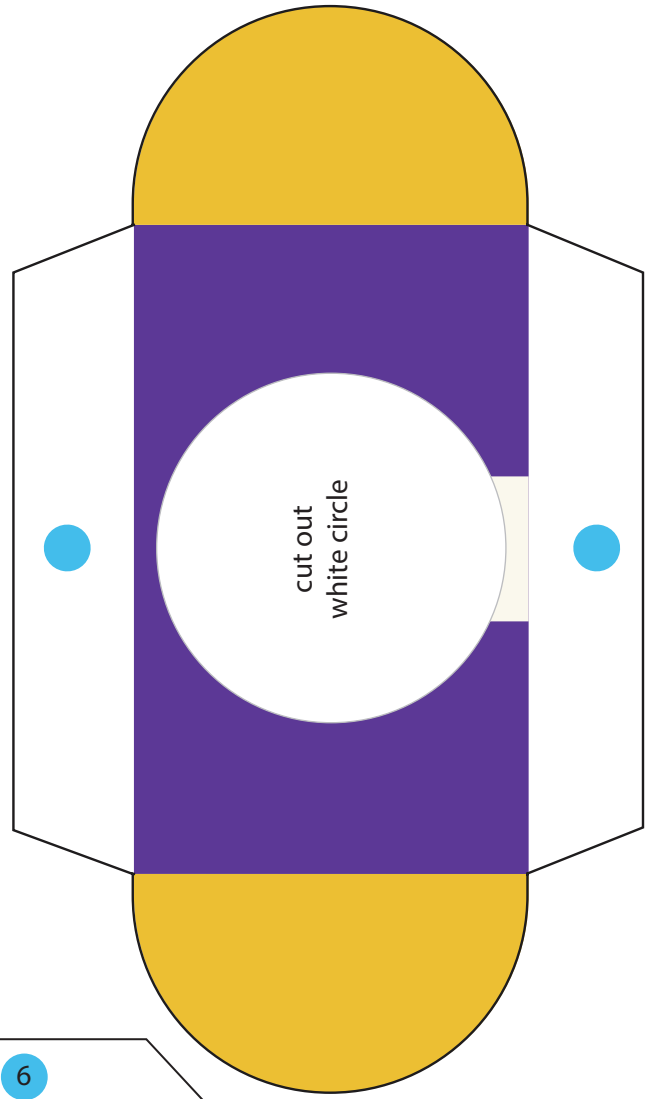




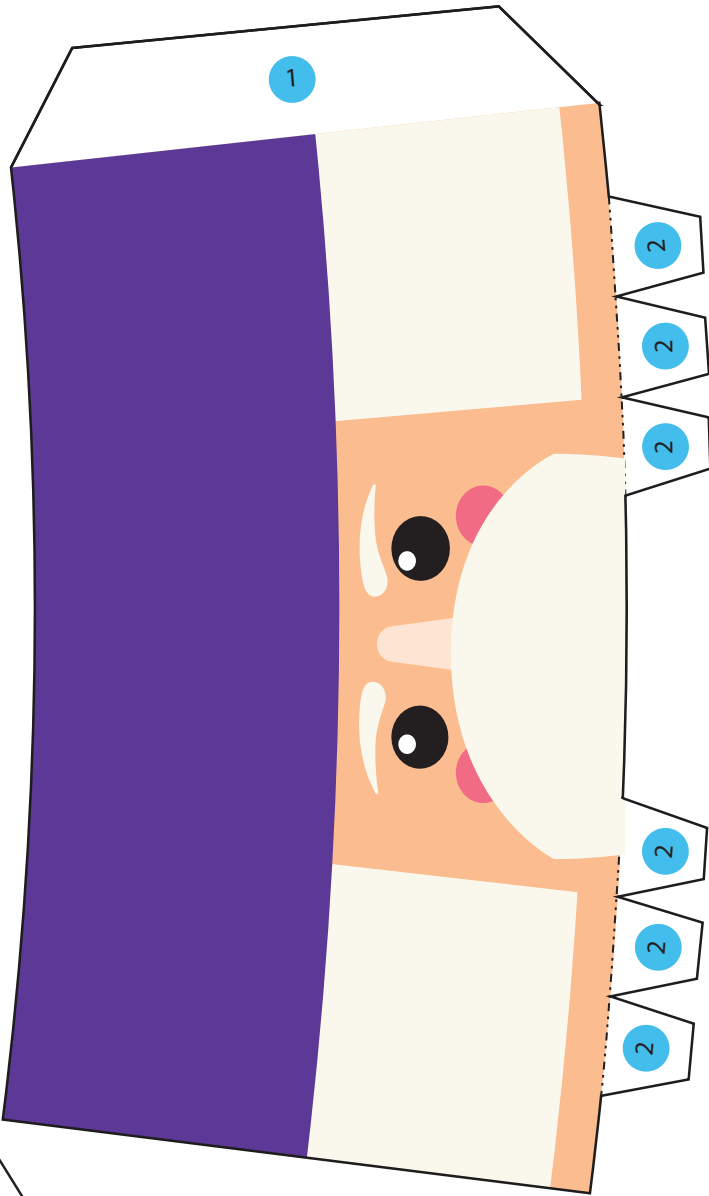
Legs Base



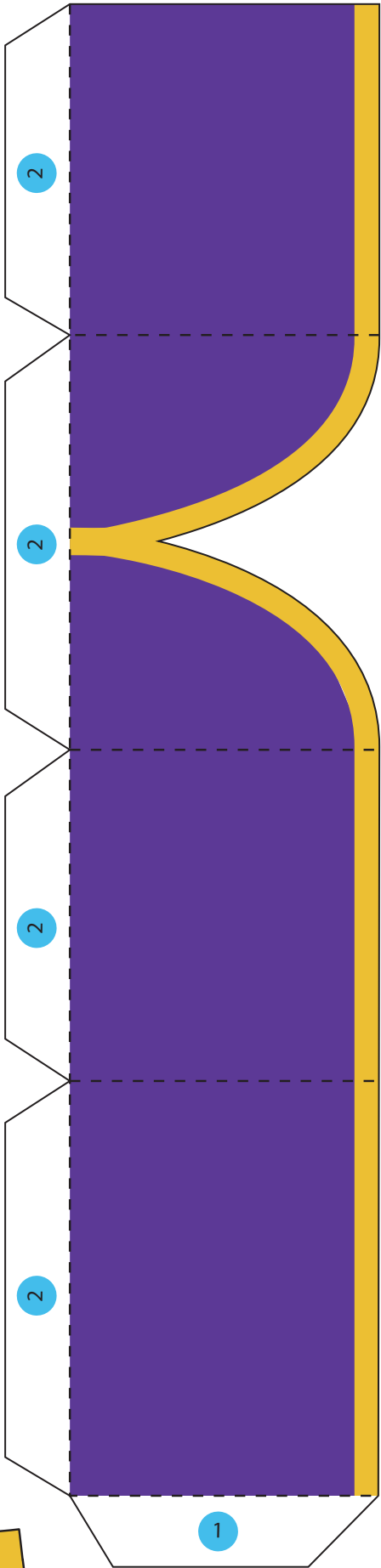
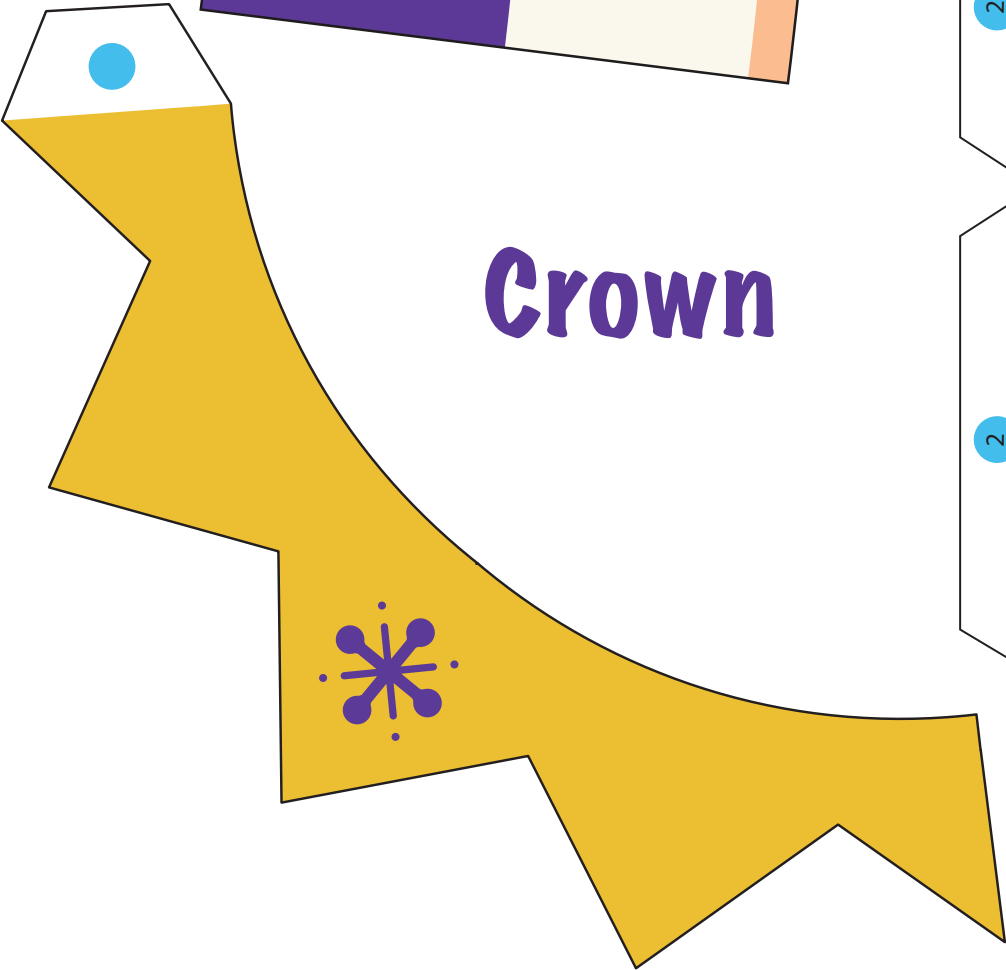
Torso



Head

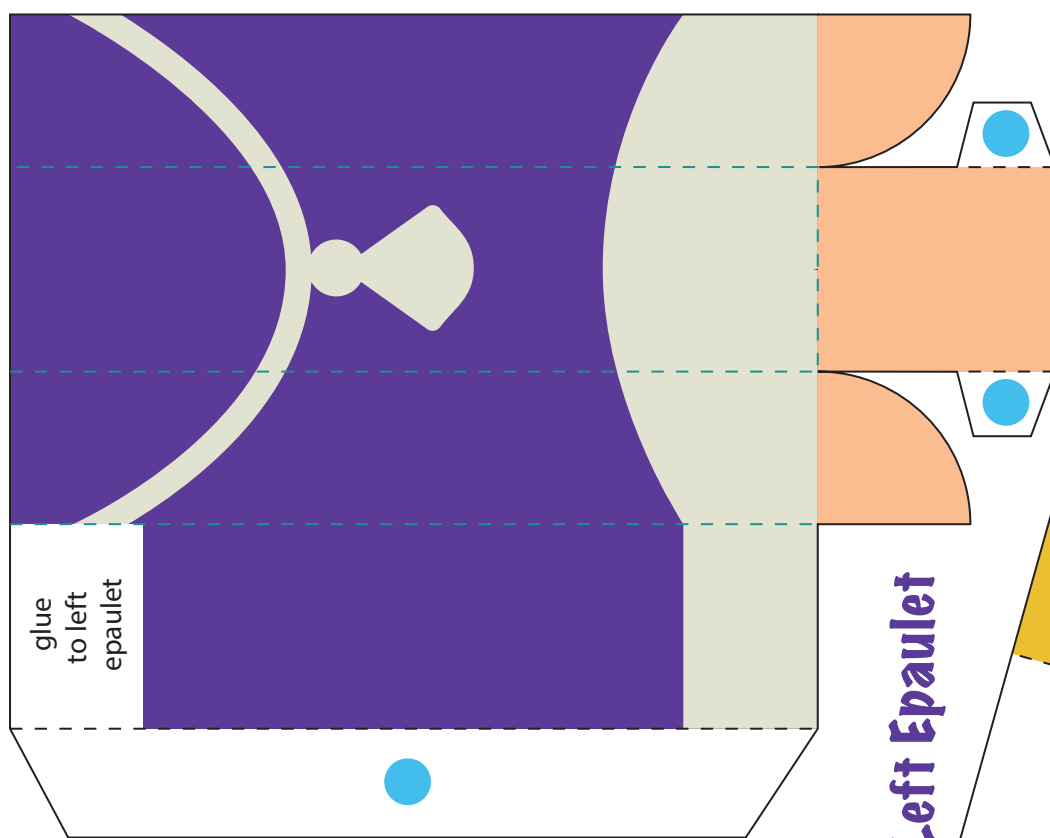


Crown



Hips

Left Arm



Right Arm

